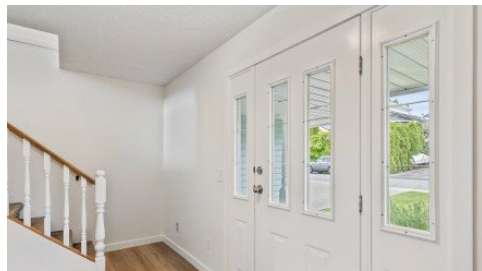


22421 Morse Crescent
Maple Ridge, V2X 0K8

RE/MAX
LIFESTYLES REALTY

Powered by homes.mapleridgenews.com

MLS# R3008241



\$1,074,900

5 Bedrooms | 3 Bathrooms | 2,121 Sqft

CENTRAL MAPLE RIDGE - Conveniently located basement entry home with fresh paint, new kitchen and appliances, and recent flooring throughout. Situated on a no through street, easy access to Abernethy Way, steps to transit, Alouette Elementary, and a quick walk to all the amenities of downtown. The level entry basement features tons of daylight, a walk out patio, 2 beds, and would make a great inlaw suite. Upstairs are 3 more beds, spacious living room with wood burning fireplace, and easy access to a large sundeck. Book your appointment with your Realtor today. *Photos showing furniture are virtually staged* Walk through Tour attached



RE/MAX LifeStyles Maple Ridge

Phone: (604) 466-2838

RE/MAX LifeStyles Realty

Office: (604) 466-2838

For full listing details, please scan:

