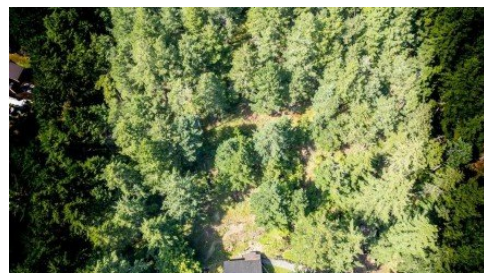


9907 Gowlland Point Road
Islands-Van. & Gulf, V0N 2M3

RE/MAX
LIFESTYLES REALTY

Powered by homes.mapleridgenews.com

MLS# R3013553



\$860,000

2 Bedrooms | 2 Bathrooms | 729 Sqft

Tucked into the peaceful beauty of South Pender Island, this 2.02 ac property offers privacy, sunshine and a park-like setting. The completely renovated 1-bed, 1-bath home is move-in ready, with all-new electrical, plumbing, metal roof, heat pump, new kitchen, windows and bathroom. The 333sf south-facing deck perfect for morning coffee, quiet afternoons, or al fresco dinners. An updated 1-bed, 1-bath cottage for add'l space, visitors or rental. Enjoy your bright, new workshop. Steps to ocean access at Gowlland Point and across the street from the spectacular Brooks Point Regional Park. Whether you're looking for a quiet retreat to enjoy as-is or a property with long-term potential, this is it. South Pender bylaws allow for a new primary dwelling while keeping the current home as a cottage.



RE/MAX LifeStyles Maple Ridge

Phone: (604) 466-2838

RE/MAX LifeStyles Realty

Office: (604) 466-2838

For full listing details, please scan:

