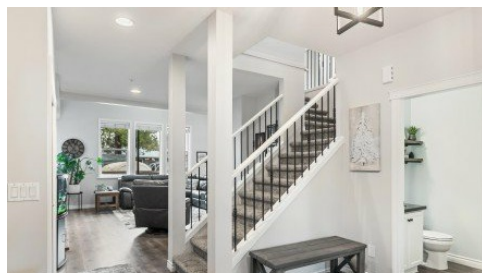


118 - 21868 Lougheed Highway
Maple Ridge, V2X 2S4

RE/MAX
LIFESTYLES REALTY

Powered by homes.mapleridgenews.com

MLS# R3019108



\$1,224,900

6 Bedrooms | 4 Bathrooms | 2,958 Sqft

NOT ON LOUGHEED HWY Meticulously kept 2 Storey + basement in desirable west Maple Ridge situated on a private street. Beautifully renovated home offers a bright open main floor with a den & 2 storey great room with cozy fireplace. Large primary bedroom with walk-in and closet, ensuite with stand alone shower and tranquil soaker tub. Basement is perfect for the extended family with its own Separate entry, patio, 2 bedrooms, bathroom, separate laundry and rough in for kitchen with 220V. Low maintenance yard with turf is perfect for entertaining, large covered patio with gas BBQ hookup, a finished shed for hobbies or storage. No expense has been spared with Navien hot water on demand, newer furnace, A/C, roof, new exterior paint. Low bareland strata fee includes garbage pick up/snow removal!



RE/MAX LifeStyles Maple Ridge

Phone: (604) 466-2838

RE/MAX LifeStyles Realty

Office: (604) 466-2838

For full listing details, please scan:

