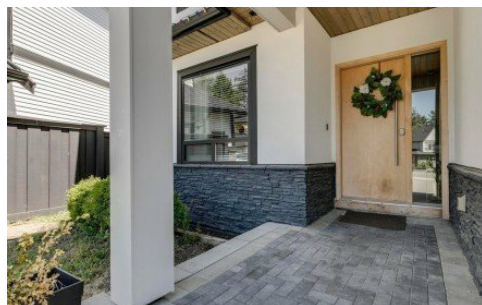


**4446 Emily Carr Place**  
Abbotsford, V3G 0E9

**RE/MAX**  
LIFESTYLES REALTY

Powered by [homes.mapleridgenews.com](https://homes.mapleridgenews.com)

**MLS# R3026432**



**\$1,858,000**

**9 Bedrooms | 8 Bathrooms | 7,151 Sqft**

Located on a quiet cul-de-sac in the coveted Auguston community, this 7,151+ sq ft contemporary home sits on a 12,272 sq ft lot backing onto greenbelt and is just a 5-minute walk to Auguston Elementary. With nine beds and eight baths, it features a dramatic great room with floor-to-ceiling windows and a fireplace. The chef's kitchen includes high-end appliances and a spacious spice kitchen. A luxurious primary suite is on the main floor, while upstairs offers four master suites with walk-in closets and a flex room with private patio access. The lower level includes a 2-bedroom in-law suite with potential for a second guest suite.



**RE/MAX LifeStyles Maple Ridge**

Phone: (604) 466-2838

RE/MAX LifeStyles Realty

Office: (604) 466-2838

For full listing details, please scan:

