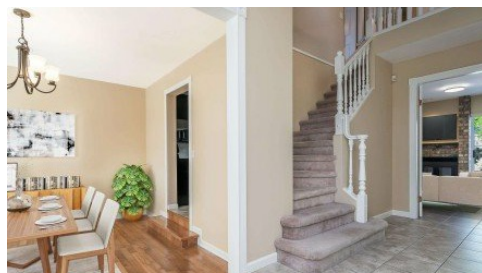
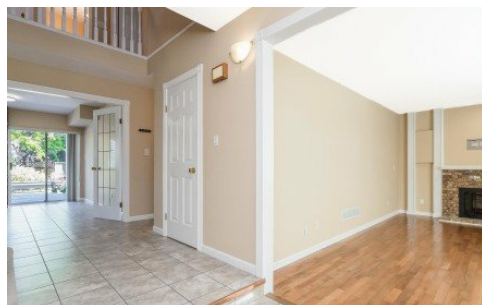


**915 Citadel Drive**  
Port Coquitlam, V3C 5J2

**RE/MAX**  
LIFESTYLES REALTY

Powered by [homes.mapleridgenews.com](https://homes.mapleridgenews.com)

**MLS# R3049425**



**\$1,399,000**

**3 Bedrooms | 3 Bathrooms | 2,019 Sqft**

Hot, Hot Price! don't miss out! Unique Family 3 Bed, 3 Bath Home at top of Citadel Heights! Great curb appeal sitting up from the road. Solid built home with Formal Living & Dining rm with 9' ceilings & hardwood floors. Kitchen with SS appliances, open to Family rm & Nook. Home features 3 updated bathrooms, a huge Deck with Gardens, inground sprinklers, central vacuum, fenced yard. Double car garage off rear laneway, Lots of parking in driveway & on Street out front. Location, Location Short walk to all Schools, Castle Water Park! Mary Hill Bypass is nearby for easy commute, plus Bus Transit out front. Open house Sat 2-4pm, September 27th.



**RE/MAX LifeStyles Maple Ridge**

Phone: (604) 466-2838

RE/MAX LifeStyles Realty

Office: (604) 466-2838

For full listing details, please scan:

