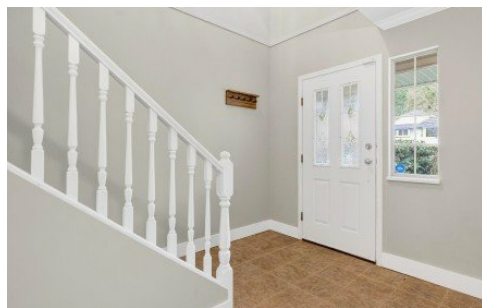


23258 121a Avenue
Maple Ridge, V2X 0X1

RE/MAX
LIFESTYLES REALTY

Powered by homes.mapleridgenews.com

MLS# R3087241



\$1,249,900

5 Bedrooms | 3 Bathrooms | 2,368 Sqft

Functional 5-bedroom family home in a lovely neighbourhood featuring an open floor plan with oversized rooms and an updated modern kitchen. Numerous upgrades completed by the current owner, including full replacement of Poly-B plumbing and a new covered deck. Main floor offers formal living and dining area plus a family room off the kitchen with space for kitchen table. Fully finished basement has its own entrance plus French doors to the patio. Oversized double garage with space for storage and a workbench, plus a large flat driveway with lots of parking. South facing rear yard includes a garden shed. Walking distance to town, close to transit and schools, with easy access to Dewdney, Abernathy, and Lougheed Highway. Some STAGED Photos. OPEN HOUSE Sat Feb 14 | 1 3 PM



RE/MAX LifeStyles Maple Ridge

Phone: (604) 466-2838

RE/MAX LifeStyles Realty

Office: (604) 466-2838

For full listing details, please scan:

