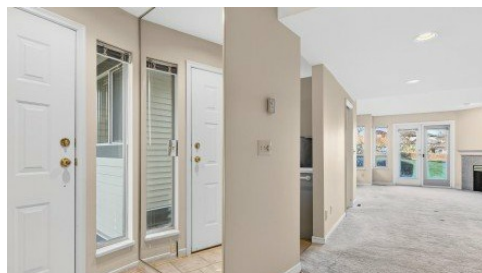


42 - 1207 Confederation Drive
Port Coquitlam, V3C 6B8

RE/MAX
LIFESTYLES REALTY

Powered by homes.mapleridgenews.com

MLS# R3088187



\$899,000

3 Bedrooms | 3 Bathrooms | 1,584 Sqft

Welcome to Citadel Heights, a well-kept 3-bedroom, 2-storey townhouse in a family-friendly neighbourhood. The bright main floor offers open living & dining areas highlighted by a cozy gas fireplace and access to a patio overlooking a beautiful shared green space. The large kitchen provides plenty of room for everyday living, and the carpets have been professionally cleaned for move-in comfort. Upstairs features a generous primary bedroom with a 3-piece ensuite, plus 2 additional bedrooms with deep closets and access to a private covered balcony. Ideally located close to schools, Fraser River walking trails & with easy access to major commuter routes. Open House Saturday Feb 14, 1:30-3:30PM & Sunday Feb 15, 2-4PM



RE/MAX LifeStyles Maple Ridge

Phone: (604) 466-2838

RE/MAX LifeStyles Realty

Office: (604) 466-2838

For full listing details, please scan:

